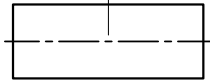


P/N: 60-13-2M06-018 (REV. A)

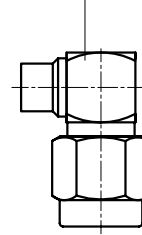
Description: SMA Right Angle Male Solder for RG402/.141 Cable

Heatshrink Sleeve
(option)

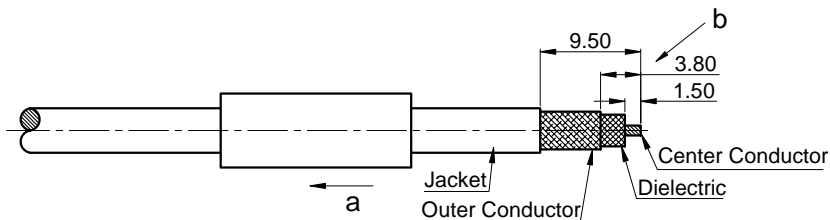
Back Nut



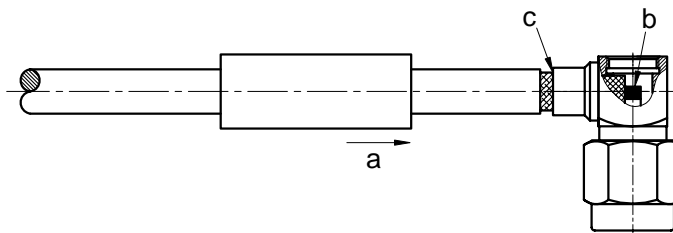
Main Body

**STEP 1**

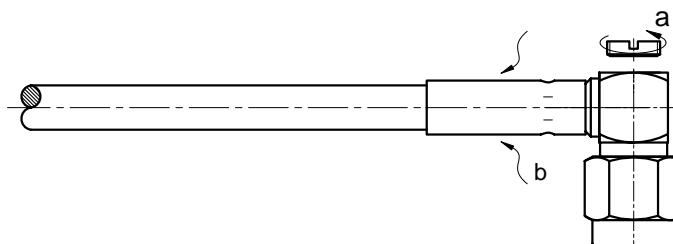
- Slide the Heatshrink Sleeve onto the cable (option).
- Strip the cable according to the dimensions as below.

**STEP 2**

- Slide the cable into the Main Body.
- Solder the cable's inner conductor.
- Solder the cable's outer conductor onto the Main Body.

**STEP 3**

- Screw the Back Nut onto the Main Body.
- Slide the Heatshrink Sleeve over the Main Body and heatshrink it in place (option).



Note: Dimensions in millimeters (mm).